

# Shortstub™

## Stick Electrode Holder

Issued Sept. 2014 • SPEC SS-1.3

40B Shortstub™



### Time Tested Performance.

Our stick electrode holder provides high quality with a wide range of styles, sizes and capacities to enhance your welding applications.

Electrodes can be used to within one inch of the high heat, high impact head compared with the normal three inches of the electrode that is leftover when using a typical tong-type holder.

Bernard Shortstub greatly improves productivity because it is designed for quick, easy installation of electrodes and it is built to last with a proven high impact, high heat replaceable head.

Bernard Shortstub models provide long life because the replaceable head can be ordered separately and installed quickly, eliminating total replacement.

Bernard's Shortstub has maintained its time-tested design for decades.

Over 2,000 pounds of gripping pressure enables the electrode to be bent to a desired shape for access to difficult welds.

Specifications					
Capacity	Electrode Size	Weight	Length	Cable Connection	Cable Socket
400 Amps at 60% duty cycle	1/16" - 1/4" (1.6 mm - 6.4 mm)	17oz (481 g)	8 3/4 (22 cm)	Model "B" large ball point screw connection	19/32" (1.5 cm)

Made with  
Pride and without  
Compromise in the **USA**

### Bernard

A Division of Miller Electric Mfg. Co.  
449 West Corning Road, Box 667  
Beecher, Illinois 60401 USA

Phone: 1-855-MIGWELD (644-9353) (US & Canada)

1-519-737-3030 (International)

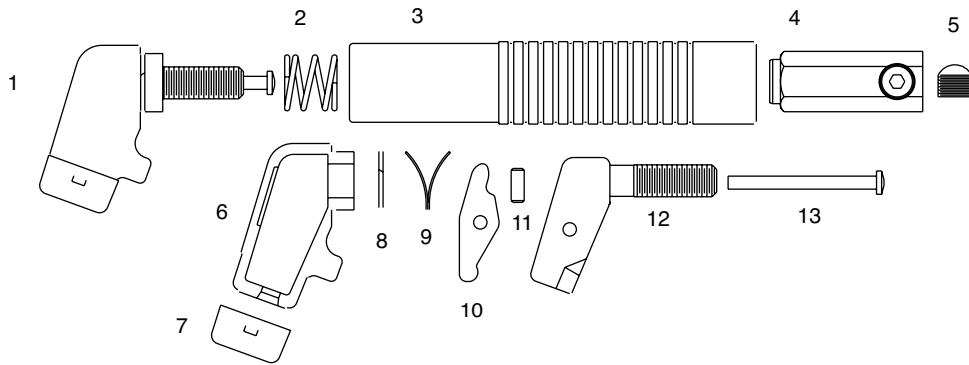
Fax: 708-946-6726

For more information, visit us at [BernardWelds.com](http://BernardWelds.com)

**BERNARD™**

# Replacement Parts List

## 40B Shortstub™



1. Head Assembly	K40	9. V Jaw Spring	V4
2. Coil Spring	S5	10. Jaw	J4
3. Handle (molded)	MH4	11. Jaw Pin	JP4
4. Connector Body	B37	12. Head	H4
5. Ball Point Set Screw	B33	13. Pressure Pin	PP4
6. Head Insulator (Pair)	EL		
7. Boot	BB4		
8. Snap Ring	SR4		