

UTP MAINTENANCE REPAIR ELECTRODES

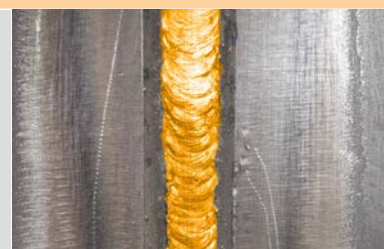
REPAIR OF STEELS

Coated electrode UTP 614 Kb

Joining & repair of mild steels
Available in DRY SYSTEM packaging

Coated electrode for joining & repair of cracks and broken parts made of mild steels
Good mechanical properties

- » Double-coated stick electrode with good weldability even for welding out of position
- » Mild steels with yield strength up to 400 N/mm²
- » Joining of mechanical steel structures
- » Crack repair
- » Repair of defects



Coated electrode UTP 65 D

All-purpose electrode for joining & repair steels with difficult weldability
Available in DRY SYSTEM packaging

Coated electrode for joining, repair of cracks and broken parts made of steels and for weld overlays with high strength and an excellent weldability

- » Mild and low-alloyed steels with high mechanical properties
- » Joining steels with difficult weldability and spring steels
- » Dissimilar joints stainless/mild steels
- » Repair of gear teeth, cams and camshafts
- » Repair of bearing surfaces

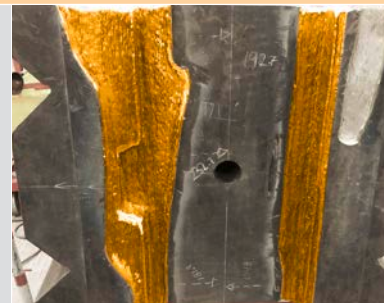


Coated electrode UTP 068 HH

Large repairs of special castings and steels with high carbon content
Available in DRY SYSTEM packaging

Nickel base electrode for joining & repair of cracks and broken parts with heavy thicknesses

- » Steels with elevated carbon content
- » Dissimilar joints of steels with post weld heat treatment
- » Tough buffer layers and build-ups beneath hardfacing overlays
- » Excellent resistance to compressive stresses
- » Corrosion resistant
- » Service temperatures from -196°C up to 900°C
- » Repairs of kiln tires in cement plants
- » Crack repair of tool steels



REPAIR OF CAST IRONS

Coated electrode UTP 86 FN

Repair & joining of cast irons by cold welding Available in DRY SYSTEM packaging

Coated electrode type ferro-nickel with excellent weldability for joining, repair and weld overlay of ductile cast irons

- » Buffer layers and build-ups of spheroidal graphite cast irons
- » Joining of grey cast irons after a buffer layer with UTP 8
- » Joining cast iron to cast iron and cast iron to steel
- » Engine blocks, gear boxes of cast iron
- » Repair of deep drawing tools and housings



Coated electrode UTP 8

Repair of grey cast irons by cold welding Available in DRY SYSTEM packaging

Coated electrode type pure nickel with excellent weldability designed for repair and weld overlay of lamellar graphite cast irons

- » Buffer layer prior welding with UTP 86 FN



Stick electrode	Dimensions in mm (ø x length)	Weight per unit in kg	Article number
UTP 614 Kb	2.5 x 350	1.4	45829
	3.2 x 350	1.4	44284
	4.0 x 450	2.7	50323
UTP 65 D	2.5 x 250	1.2	49362
	3.2 x 350	1.3	49338
	4.0 x 350	1.1	46763
UTP 068 HH	2.5 x 300	1.2	75664
	3.2 x 300	1.2	75665
UTP 86 FN	2.5 x 300	1.2	49382
	3.2 x 350	1.3	49398
UTP 8	2.5 x 300	1.2	49366
	3.2 x 350	1.5	49369

For more information, please contact:

